



Science.
Applied to Life.™



New! 3M™ Silver Cut-off Wheels

Cut to the chase.

Get the long life and fast-cutting action of 3M precision-shaped grain—now in a cut-off wheel designed to give you great performance and great value!

Ideal for industries such as

- Agricultural, industrial and construction machinery
- General metal fabrication
- Oil and gas infrastructure
- Rail
- Shipbuilding
- Stainless steel fabrication
- Structural steel
- Tank and vessel



A cut above the rest

Does your cut-off wheel give up before the job is done? Does it heat up and slow to a crawl after a few cuts? Does it give you a rough, ragged kerf? Well, if your cut-off wheel just can't cut it, here's great news:

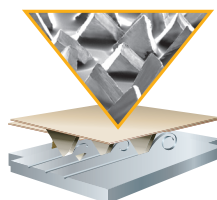
New 3M™ Silver Cut-off Wheels are a new kind of premium performance wheel designed to be affordable for everyday use. Featuring 3M precision-shaped grain technology, these innovative wheels cut cool, to deliver fast, smooth cutting action on all types of ferrous metals, stainless steels and alloy steels. And customers report that they last longer than competitive aluminum oxide and alumina zirconia wheels. That means fewer wheel changes and more finished parts per wheel, to help improve shop productivity and control your costs.

To request a sample, please visit
3M.ca/SilverAbrasives

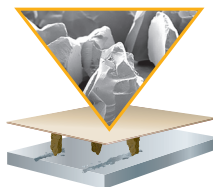
Make short work of cutting pipes, tubes, flat sheets and more.

Optimized for use on carbon steel and stainless steel

The science of precision-shaped grain

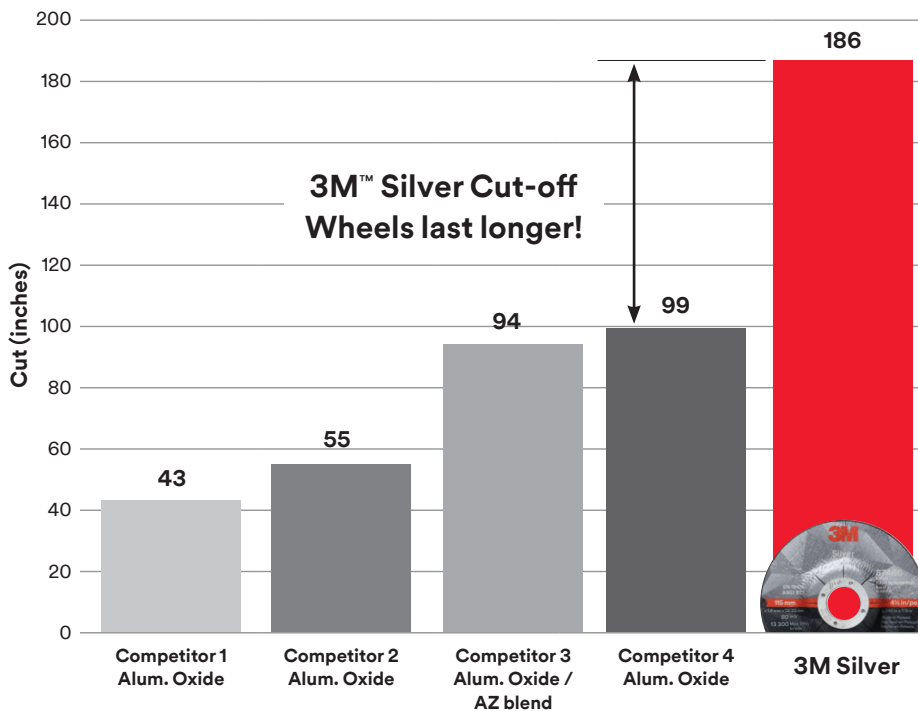


3M precision-shaped grain uses 3M microreplication technology to form sharp peaks that easily “slice” through metal — cutting cooler and faster, lasting longer than conventional abrasive grain.



Conventional ceramic abrasive grain tends to “plow” through the metal, causing heat to build up in the workpiece and the abrasive — resulting in a slower cut and shorter wheel life.

Wheel life



Internal 3M testing on 304L stainless steel sheet (11 gauge) using a 13 amp electric tool. Wheels are tested to end of life.

► Tech tip – Size matters

Wheel thickness affects wheel performance. The thicker the wheel, the longer the life and the slower the cut rate. When cutting thicker material, use a thicker and larger diameter wheel to maximize wheel life. Thinner wheels cut faster and wear faster. They also work better on thin gauge materials.

3M™ Silver Cut-off Wheels – Type 1

Diameter × Thickness × Arbour Hole (inches)	Part #	Max. RPM	Quantity/Case
4.5 × .040 × 7/8	87464	13,300	50
4.5 × .045 × 7/8	87465	13,300	50
5 × .045 × 7/8	87467	12,250	50
6 × .045 × 7/8	87469	10,200	50
7 × .045 × 7/8	87471	8,500	50

3M™ Silver Cut-off Wheels – Type 27

Diameter × Thickness × Arbour Hole (inches)	Part #	Max. RPM	Quantity/Case
4.5 × .045 × 7/8	87466	13,300	50
5 × .045 × 7/8	87468	12,250	50
6 × .045 × 7/8	87470	10,200	50

Complete your lineup with 3M metalworking products.

Optimize your performance – with genuine 3M power tools!

Lightweight but rugged, these hard-working power tools are designed with a high power-to-weight ratio to help operators get more work done in less time.

- Easily cuts through everything from standard rebar to oversized bolts
- Model 28826 provides greater versatility and control, with right angle head and easily repositionable guard



Model #	20233	28771	28826
Description	3M™ Cut-off Wheel Tool 20233, 3" 1HP	3M™ Cut-off Wheel Tool 28771, 4" 1HP	3M™ Cut-off Wheel Tool 28826, 4 ½" - 5" 1.5 HP
Maximum RPM	25,000	19,000	12,000



Model #	28403	28405	28824
Description	3M™ Grinder 28403, 4" 1HP	3M™ Grinder 28405, 4½" 1HP	3M™ Grinder 28824, 4 ½" - 5" 1.5 HP
Maximum RPM	12,000	12,000	12,000

Tech tips

Powering up for performance

- Cut-off wheels perform better the faster they run, so having a tool able to maintain speed is crucial.
- The higher the tool power, the easier it can maintain speed, resulting in faster cut time and longer wheel life.
- When the tool speed decreases, wheel wear typically increases.
- **Do not** exceed the maximum operating speed listed on the wheel!

Help stay safe on the job with 3M Personal Protective Equipment



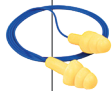
Lightweight, comfortable welding helmet with advanced auto-darkening optics that adjust to your working conditions.
3M™ Speedglas™ Welding Helmet 9002NC
 (PN 04-0100-20NC)



Helps protect your head and face against sparks, chips and debris.
3M™ Ratchet Headgear and Face Protection
 (PN 82783-00000)



Comfortable eye protection with anti-fog lenses for a clear view of your workplace.
3M™ SecureFit™ Protective Eyewear
 (PN SF401AF)



Quick, comfortable hearing protection that stays clean even when your hands are dirty.
3M™ E-A-R™ UltraFit Corded Earplugs
 (PN 340-4004)

Got a need for speed? For an even faster cut rate, try 3M™ Cubitron™ II Abrasives.

For more information please visit 3M.ca/Cubitron-II-Abrasives

To request a sample, please visit 3M.ca/SilverAbrasives



Product Selection and Use: Many factors beyond 3M's control and uniquely within user's knowledge and control can affect the use and performance of a 3M product in a particular application. As a result, customer is solely responsible for evaluating the product and determining whether it is appropriate and suitable for customer's application, including conducting a workplace hazard assessment and reviewing all applicable regulations and standards (e.g., OSHA, ANSI, etc.). Failure to properly evaluate, select, and use a 3M product and appropriate safety products, or to meet all applicable safety regulations, may result in injury, sickness, death, and/or harm to property.

Warranty, Limited Remedy, and Disclaimer: Unless a different warranty is specifically stated on the applicable 3M product packaging or product literature (in which case such warranty governs), 3M warrants that each 3M product meets the applicable 3M product specification at the time 3M ships the product. 3M MAKES NO OTHER WARRANTIES OR CONDITIONS, EXPRESS OR IMPLIED, INCLUDING, BUT NOT LIMITED TO, ANY IMPLIED WARRANTY OR CONDITION OF MERCHANTABILITY, FITNESS FOR A PARTICULAR PURPOSE, OR ARISING OUT OF A COURSE OF DEALING, CUSTOM, OR USAGE OF TRADE. If a 3M product does not conform to this warranty, then the sole and exclusive remedy is, at 3M's option, replacement of the 3M product or refund of the purchase price.

Limitation of Liability: Except for the limited remedy stated above, and except to the extent prohibited by law, 3M will not be liable for any loss or damage arising from or related to the 3M product, whether direct, indirect, special, incidental, or consequential (including, but not limited to, lost profits or business opportunity), regardless of the legal or equitable theory asserted, including, but not limited to, warranty, contract, negligence, or strict liability.



3M Abrasive Systems Division
3M Canada
 P.O. Box 5757
 London, ON N6A 4T1
 1-800-364-3577
3M.ca/Abrasives

3M, 3M Science. Applied to Life., Cubitron, Speedglas, SecureFit and E-A-R are trademarks of 3M. Used under license in Canada. © 2018, 3M. All rights reserved. 1711-10370 E BA-18-25053